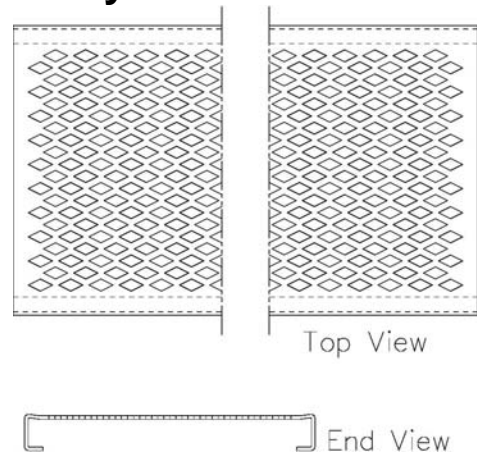
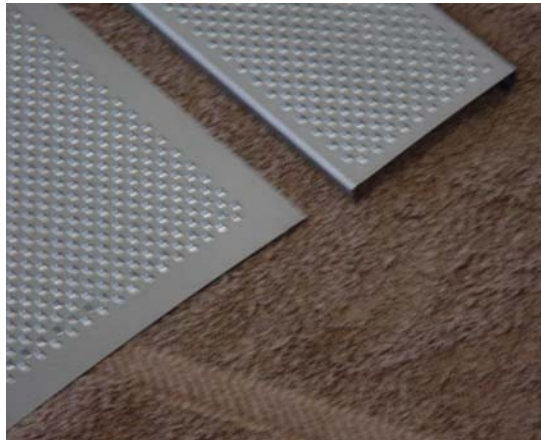


1 1/2” Scale Open Grid (USG Style) Walkway



This is an exact scale reproduction of the walkway used on most modern equipment. Commonly seen as top walkways and platforms on tank cars, end platforms on container cars and on EMD diesel locomotives. Made from 20 gauge steel with a two stage die forming operation that punches the openings and then forms the edges upward to give the anti-slip design as in the prototype. The fully formed walkway channels include side and bottom flanges and a top offset and measure 3” wide and 3/8” high. The flat panels have approximately 1/2” of unpunched material on all four edges.

Note: For diamond plate see our locomotive parts in section 7

Stock Number	Description	Cost	Weight	Packing Handling
15G1A	Open grid walkway channel, 24” length	\$30.00	2	
15G1B	Open grid walkway sheet, 6” by 12” overall	\$25.00	2	

Coupler Pocket, 1 1/2” Scale

This coupler pocket is for appearance only, it does not support the coupler. It is large enough to cover the end of any of our tube frames or coupler mount, which will retain the coupler.

- Made of Aluminum - Furnished Machined but Not Drilled for Mounting Bolts (since this depends on your design) - Ready to Paint
- End Opening is 3/4” High to Fit Standard Coupler Shanks
- Overall Dimensions are 2” (50.8mm) High, 3.5” (88.9mm) Wide and 0.5” (12.7mm) Thick.



Stock Number	Description	Cost Each	Weight	Packing Handling
15G2A	Coupler Pocket	\$21.00	1	

Drawbars, 1 1/2" Scale

Consider the use of a drawbar in place of couplers. Drawbars are less expensive and much more reliable. Some clubs that normally require safety chains between cars with couplers allow drawbars by themselves (but check first).



- Short Length for Replacement of Two Standard Couplers
- Long Length for Replacement of Loop Shank Couplers or Wherever More Space is Desired Between Cars or Locomotive and Tender
- Made of Low Carbon Steel - Furnished Completely Machined - Black Zinc Finish
- 5/8" (15.9mm) High - 1" (25.4mm) Maximum Width - Fits Standard 3/8" Coupler Bolts (not included)

Stock Number	Description	Cost	Weight	Packing Handling
15G3A	Short Drawbar (7 inch (178mm) center distance)	\$32.00	2	
15G3B	Long Drawbar (10 inch (254mm) center distance)	\$35.00	3	

Quarter-Size Iron Coupler

This highly detailed model of a modern coupler has been designed in 3" scale and is one-quarter full size. Since narrow gauge equipment often used couplers that were smaller, also suitable for 5" scale equipment.



- Furnished In Kit Form Including Cast Ductile Iron Body, Knuckle, and Latch Pin and Finish Machined Steel Pivot Pin
- Includes Complete Instructions
- Utilizes an Internal Cam to Open Knuckle
- Requires Clean-Up, Drilling and Fitting to Assemble

Stock Number	Description	Cost	Weight	Packing Handling
30G4A	Quarter Size Iron Coupler Kit, Iron	\$91.00	12	

Coupler Pocket, 3", 3 3/4" and 5" Scales

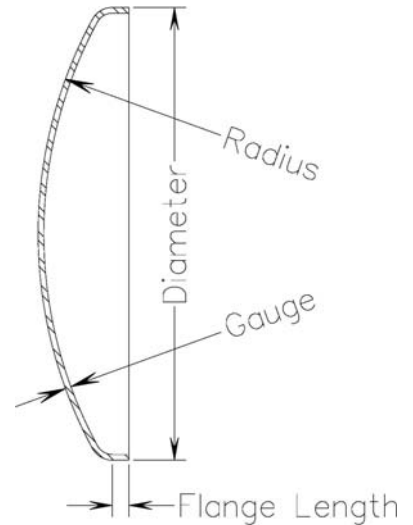
This coupler pocket is for appearance only, it does not support the coupler.

- Overall Dimensions are 4" (101.6mm) High and 6" (152.4mm) Wide
- End Opening is 1 3/4" High and 4 9/16" Wide to Fit Standard Coupler Shanks



Stock Number	Description	Cost Each	Weight	Packing Handling
30G2A	Coupler Pocket	\$25.00	2	

Tank Heads, All Scales



If you are building a tank car or Vanderbilt tender, these are the parts you need. Formed by the Same Company that Makes the Full Size Ones, By the Same Method, Using Hot Rolled Steel. Drawing Shows a Cross Section Through the Center.

Stock Number	Description	Cost	Weight	Packing Handling
99G5A	Tank Head, 6" diameter and radius, 12 gauge, 1/2" flange length	\$26.00	6	
99G5B	Tank Head, 8" diameter and radius, 12 gauge, 1" flange length	\$30.00	8	
99G5C	Tank Head, 10" diameter and radius, 12 gauge, 3/4" flange length	\$34.00	10	
99G5D	Tank Head, 12" diameter and radius, 12 gauge, 3/4" flange length	\$39.00	12	
99G5E	Tank Head, 14" diameter and radius, 10 gauge, 1" flange length	\$51.00	14	
99G5F	Tank Head, 16" diameter and radius, 10 gauge, 1" flange length	\$64.00	17	